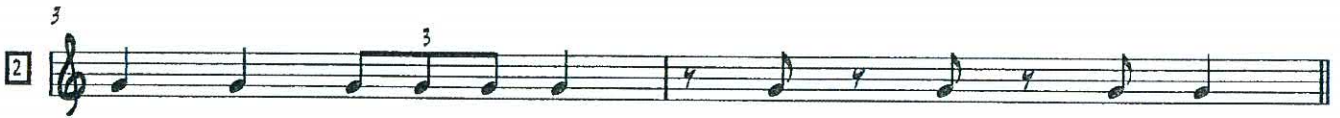


RYTMISK IMITATION



MELODISK IMITATION



IMPROVISATION OVER FORESPILLET GROOVE

The image shows four lines of handwritten musical notation, each representing a measure of a 4/4 groove. The notation is in treble clef and 4/4 time. The chords are written above the staff lines, which are divided into four equal parts by vertical bar lines. The first line starts with a treble clef and a 4/4 time signature. The second line starts with a measure rest. The third and fourth lines also start with a measure rest.

Line 1: C_{MA7}^7 | A_{M7} | D_{M7} | F/g | G

Line 2: 5 C_{MA7}^7 | A_{M7} | D_{M7} | F/g | G

Line 3: 9 F_{MA7}^7 | E_{M7} | D_{M7} | C_{MA7}^7 | C^7

Line 4: 13 F_{MA7}^7 | E_{M7} | D_{M7} | F/g